



**2024**

## **QUICK PRODUCTS GUIDE**

---

Industrial Lighting, Street Lighting  
and Explosion Proof Lighting



# Industrial Lighting



## LED Floodlight

Guaraú Line · CLH

IP66

30W to 200W



## Modular LED Floodlight

Indaiá Line · CLF-MP(C)

IP67

51W to 403W



## Modular LED High Mast Floodlight

Itaguá Line · CLF-HP(F)

IP67

500W to 1200W



## Armored LED Floodlight

Guaecá Line · CLG-J(D)

IP67

27W to 397W



## Armored LED High Mast Floodlight

Guaiúba Line · CLG-HP(D)

IP67

486W to 794W



## Armored LED High Mast Floodlight

Guaiúba Line · CLG-HG(D)

IP67

980W to 1470W



## Armored LED Floodlight For Environments with High Temperatures

Guaecá Line · CLG-HT

IP67

50W to 200W

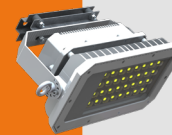


## Armored LED Floodlight With Anti-Corrosion Coating CONEXREVEST

Guaecá Line · CLG-CR(D)

IP67

27W to 397W



## Armored LED Floodlight With Anti-Vibration Suspension

Guaecá Line · CLG-SPR

IP67

27W to 397W



## Armored LED Floodlight

Maraú Line · CLR-I(F)

IP67

49W to 378W



## Industrial LED Luminaire

Timbó Line · CLT(D)

IP66

22W to 90W



## Linear LED Luminaire

Icapara Line · CLL-H(P)

IP42

24W to 120W



## Industrial LED Luminaire Tortoise-Type

Tijucopava Line · CLT-T

IP66

19W and 43W



## LED Tri-Proof Industrial

Boracéia Line · CLB-H(P) · CLB-H(P)IP69K

IP66

IP69K

20W to 90W



## Hermetic Industrial Plastic LED Luminaire

Boracéia Line · CLB-H(D)

IP66

20W to 50W



## Industrial Portable LED Luminaire

Tapirema Line · CLM

IP66/IP67

18W

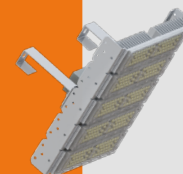


## LED High Bay Industrial

Pinguaba Line · CLI-H(F)

IP66

104W to 193W



## Modular LED High Bay

Indaiá Line · CLF-HB(P)

IP67

51W to 302W

## Explosion Proof - Ex



**Explosion Proof LED Floodlight**  
Siriúba Line · CLZ-EX

Zone 1 and 2 or 21 and 22

IP66

40W to 245W





**Explosion Proof LED Floodlight**  
Itararé Line · CLG-EX(D)

Zone 2 or 21 and 22

IP67

27W to 397W





**Explosion Proof Linear LED Luminaire**  
Pacuíba Line · CLB-EX2(H)

Zone 2 or 21 and 22

IP66

35W and 65W





**Explosion Proof Linear LED Luminaire**  
Pacuíba Line · CLB-EX1(H)

Zone 1 and 2 or 21 and 22

IP66

35W and 65W





**Explosion Proof LED Luminaire**  
Sapê Line · CLY

Zone 2 or 21 and 22

IP66

23W to 185W





**Explosion Proof LED Luminaire**  
Sapê Line · CLYX

Zone 1 and 2 or 21 and 22

IP66

20W to 185W






**Tortoise Type LED Luminaire for Explosive Atmospheres**  
Perequê Line · CLY-T(D)

Zone 2 or 21 and 22

IP66

23W to 43W






**Tortoise Type LED Luminaire for Explosive Atmospheres**  
Sapê Line · CLYX-T(D)

Zone 1 and 2 or 21 and 22

IP66

20W to 43W





**Explosion Proof Industrial Portable LED Luminaire**  
Itacuruçá Line · CLX

Zone 0, 1 and 2 or 21 and 22

IP66

18W



## Ex Lighting - Emergency - Autonomous




**Explosion Proof LED Luminaire with Emergency Module**  
Perequê Line · CLY-E

Zone 2 or 21 and 22

IP66

23W to 185W






**Linear LED luminaire with Emergency Module**  
Pacuíba Line · CLB-EX2(E)

Zone 2 or 21 and 22

IP66

35W and 65W





**Explosion Proof Linear LED luminaire with Emergency Module**  
Pacuíba Line · CLB-EX1(E)

Zone 1 and 2 or 21 and 22

IP66

35W and 65W





**Explosion Proof Autonomous LED Beacon Luminaire**  
Pacuíba Line · CLB-EX2(B)

Zone 2

IP66

10W





**Explosion Proof Autonomous LED Beacon Luminaire**  
Pacuíba Line · CLB-EX1(B)

Zone 1

IP66

10W





**Explosion Proof Autonomous LED Emergency Luminaire**  
Juréia Line · CLK-EX

Zone 1 and 2 or 21 and 22

IP66

18W



## Emergency - Autonomous



**LED Portable Floodlight**  
Guaraú Line · CLH-PA

50W and 100W

Battery



**Industrial LED Luminaire with Emergency Module**  
Timbó Line · CLT-E

IP66

29W to 192W



**LED Tri-Proof Industrial Luminaire with Emergency Module**  
Boracéia Line · CLB-E(P)

IP66

20W to 90W

## Emergency - Autonomous



### Autonomous LED Emergency Luminaire

Juruvaúva Line · CLK

IP66

18W



### LED Bright Source Emergency

Juruvaúva Line · CLK-BADF

IP66

3W



### LED Bright Source Emergency

Juruvaúva Line · CLK-BA60BC

IP66

8W



### LED Bright Source Emergency

Juruvaúva Line · CLK-BA45

IP66

8W



### LED Bright Source Emergency

Juruvaúva Line · CLK-BA60

IP66

8W



### Centralized LED Emergency Luminaire for Low Temperatures

Juruvaúva Line · CLK (CE)

IP66

10W to 30W

## Ornamental / Urban Lighting



### LED Street Light-Urban

Juquehy Line · CLP-U

IP66

24W to 240W



### Solar LED Street Light

Sahy Line · CLS-UF(C)

IP66

30W to 80W



### LED Decorative Ornamental Luminaire with Glass Diffuser

Prumirim Line · CLD-L

IP66

60W to 100W



### LED Street Light-Urban

Pequeá Line · CLP-LC(F)

IP66

50W to 200W



## Commercial Lighting



### LED Light for Gas Station

Camburi Line · CLC-(F)

IP66

100W and 150W



### LED Square Panel Downlight

Guaratuba Line · CLE

IP20

30W to 85W



### LED Round Panel Downlight

Embaré Line · CLE

IP20

10W and 20W



Scan here and visit the complete datasheet of all products

Rev. 01/2024