



**2024**

# **QUICK PRODUCT GUIDE**

Industrial Lighting, Street Lighting  
and Explosion Proof Lighting



# Industrial Lighting



## Armored LED Floodlight

Guaecá Line  
CLG-J(F) · CLG-J(F)IP69K

IP67 IP69K

30W to 400W

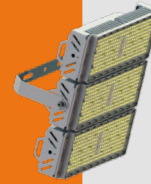


## Modular LED Floodlight

Indaiá Line · CLF-MP(F)

IP67

50W to 400W



## Modular LED High Mast Floodlight

Itaguá Line · CLF-HP(F)

IP67

500W to 1200W



## Modular LED Floodlight for Arenas and Stadiums

Itaguá Line · CLF-AP(F)

IP67

500W to 1200W



## Armored LED Floodlight

Maraú Line · CLR-IF(F)

IP67

49W to 378W

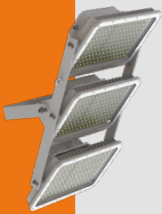


## LED Floodlight

Guaraú Line · CLH-LF(D)

IP66

30W to 200W



## Armored LED High Mast Floodlight

Guaíúba Line  
CLG-HC(D) · CLG-HP(F)

IP67

486W to 1470W



## Armored LED Floodlight For Environments with High Temperatures

Guaecá Line · CLG-HT

IP67

50W to 200W



## Armored LED Floodlight With Anti-Vibration Suspension

Guaecá Line · CLG-SPR(F)

IP67

30W to 400W



## Amber Armored LED Floodlight

Guaecá Line · CLG-JF(AB)

IP67

30W to 400W



## Industrial Armored LED Luminaire (External Housing)

Maresias Line · CLT(F)

IP67

20W to 90W



## Industrial Armored LED Luminaire

Timbó Line · CLT(D)

IP66

20W to 192W



## Industrial LED Luminaires Tortoise-Type

Tijucopava Line · CLT-T

IP66

19W and 43W



## Industrial LED Luminaire with Polycarbonate Diffuser

Itaguaré Line · CLT-P(D)

IP66

15W to 41W



## LED Tri-Proof Industrial

Boracéia Line  
CLB-H(P) · CLB-H(P)IP69K

IP66

IP69K

20W a 103W



## Hermetic Industrial Plastic LED Luminaire

Boracéia Line · CLB-H(D)

IP66

20W to 50W



## Linear LED Luminaire

Icapara Line · CLL-H(P)

IP42

24W to 120W



## LED High Bay Industrial

Picinguaba Line · CLI-H(F)

IP66

104W to 193W

## Industrial Lighting



**Modular LED High Bay**  
Indaiá Line - CLF-HB(P)  
IP67  
50W to 300W



**Industrial Portable LED Luminaire**  
Tapirema Line - CLM  
IP66/IP67  
18W



## Emergency - Autonomous



**Armored LED Floodlight with Emergency Module**  
Guaecá Line - CLG-E(F)  
IP67  
30W to 180W



**LED High Bay Industrial with Emergency Module**  
Picinguaba Line - CLI-E(F)  
IP66  
104W to 193W



**LED Portable Floodlight**  
Guaraú Line - CLH-PA  
50W and 100W  
Battery



**Industrial LED Luminaire with Emergency Module**  
Timbó Line - CLT-E  
IP66  
29W to 192W



**LED Tri-Proof Industrial Luminaire with Emergency Module**  
Boracéia Line - CLB-E(P)  
IP66  
20W to 90W



**Autonomous LED Emergency Luminaire**  
Jurupaíba Line - CLK  
IP66  
18W



**LED Bright Source Emergency**  
Jurupaíba Line - CLK-BADF  
IP66  
3W



**LED Bright Source Emergency**  
Jurupaíba Line - CLK-BA60BC  
IP66  
8W



**LED Bright Source Emergency**  
Jurupaíba Line - CLK-BA45  
IP66  
8W



**LED Bright Source Emergency**  
Jurupaíba Line - CLK-BA60  
IP66  
8W



**Centralized LED Emergency Luminaire for Low Temperatures**  
Jurupaíba Line - CLK (CE)  
IP66  
10W to 30W



## Explosion Proof - Ex - Zone 1 and 2



**Explosion Proof LED Floodlight**  
Siriúba Line - CLZ-EX

Zone 1 and 2 or 21 and 22

IP66

40W to 245W





**LED Luminaire for Explosive Atmospheres (External Housing)**  
Enseada Line - CLYX(F)

Zone 1 and 2 or 21 and 22

IP66

20W to 90W





**Explosion Proof LED Luminaire**  
Sapê Line - CLYX(D)  
Emergency Version CLYX-E

Zone 1 and 2 or 21 and 22

IP66

20W to 185W





**Tortoise Type LED Luminaire Explosion Proof**  
Sapê Line - CLY-T(D)

Zone 1 and 2 or 21 and 22

IP66

20W to 43W






**Explosion Proof Linear LED Luminaire**  
Pacuíba Line - CLB-EX1(H)

Zone 1 and 2 or 21 and 22

IP66

35W and 65W






**Linear LED Luminaire Explosion Proof with Emergency Module**  
Pacuíba Line - CLB-EX1(E)

Zone 1 and 2 or 21 and 22

IP66

35W and 65W





**Explosion Proof Autonomous LED Beacon Luminaire**  
Pacuíba Line - CLB-EX1(B)

Zone 1

IP66

10W





**Explosion Proof Autonomous LED Emergency Luminaire**  
Juréia Line - CLK-EX

Zone 1 and 2 or 21 and 22

IP66

18W





**Explosion Proof Industrial Portable LED Luminaire**  
Itacuruçá Line - CLX  
Itacuruçá Line - CLX-AUT

Zone 0, 1 and 2 or 21 and 22

IP66

5W 18W



## Explosion Proof - Ex - Zone 2



**Explosion Proof LED Floodlight**  
Itararé Line - CLG-EX(D)

Zone 2 or 21 and 22

IP67

30W to 400W





**LED Luminaire for Explosive Atmospheres (External Housing)**  
Maranduba Line - CLY(F)

Zone 2 or 21 and 22

IP66

20W to 90W





**LED Luminaire for Explosive Atmospheres**  
Sapê Line - CLY(D)

Zone 2 or 21 and 22

IP66

23W to 185W





**Tortoise Type LED Luminaire Explosion Proof**  
Perequê Line - CLY-T(D)

Zone 2 or 21 and 22

IP66

23W to 43W






**Explosion Proof LED Luminaire with Emergency Module**  
Perequê Line - CLY-E

Zone 2 or 21 and 22

IP66

23W to 185W






**Explosion Proof Linear LED Luminaire**  
Pacuíba Line - CLB-EX2(H)

Zone 2 or 21 and 22

IP66

35W and 65W






**Linear LED Luminaire Explosion Proof with Emergency Module**  
Pacuíba Line - CLB-EX2(E)

Zone 2 or 21 and 22

IP66

35W and 65W






**Explosion Proof Autonomous LED Beacon Luminaire**  
Pacuíba Line - CLB-EX2(B)

Zone 2

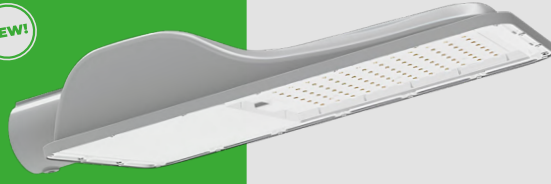
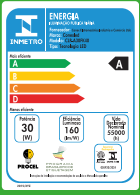
IP66

10W





## Street Lighting



**LED Street Light**  
*Iporanga Line · CLP-A(F)*

IP66

30W to 250W

## Ornamental / Urban Lighting



**LED Street Light-Urban**  
*Juquehy Line · CLP-U*

IP66

24W to 240W



**Solar LED Street Light**  
*Sahy Line*  
*CLS-UF(F) · CLS-HUF(F)*

IP66

30W to 80W



**LED Decorative Ornamental Luminaire with Glass**  
*Prumirim Line · CLD-L*

IP66

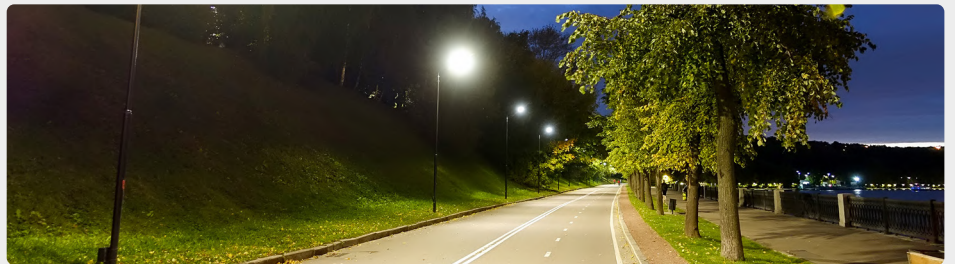
60W to 100W



**LED Street Light-Urban**  
*Pequeá Line · CLP-LC(F)*

IP66

50W to 200W



## Commercial Lighting



**LED Light for Gas Station**  
*Camburi Line · CLC-(F)*

IP66

100W and 150W



**LED Square Panel Downlight**  
*Guaratuba Line · CLE*

IP20

30W to 85W



**LED Round Panel Downlight**  
*Embaré Line · CLE*

IP20

10W and 20W



**Scan here to view the full technical specifications of all products**

Download IES files, Revit blocks, technical datasheets, and much more.

# We are Light, Energy in Motion

A reference in both the national and international markets, and part of a Group with over three decades of experience, Conexled is a manufacturer of High-Performance LED Lighting that strives for innovation and excellence each year, providing economical, sustainable, and modern lighting solutions.

Certified with ISO 9001, CRCC Petrobras, and trusted by major industries, our brand delivers exceptional solutions for large scale public and private projects.

We proudly serve over 15000 demanding customers with products manufactured, tested, and inspected in our own highly developed laboratories, all carrying the Conexled quality seal.

Each process is carefully designed to ensure safe and high-quality products, representing the excellence of our brand.



[www.conexled.com](http://www.conexled.com)

Copyright © AGOSTO/ 2024 Conexled. All Rights Reserved

We reserve the right to change product specifications without notice. Please refer to the website for the most up-to-date information.

